

Lock Up™ versus Code Black™



DOPLAR™ Test



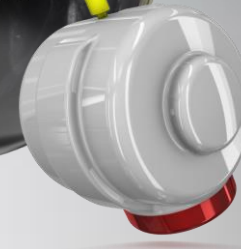
Lock Up™
 GI-17™ Solid Reactive
 2000-grit Abralon®
 RAD-X™ Core



→ **Lock Up™**
 Laydown: 29.88
 Launch Angle: -3.00°
 Break Point: 44.68'
 Impact Point: 17.89

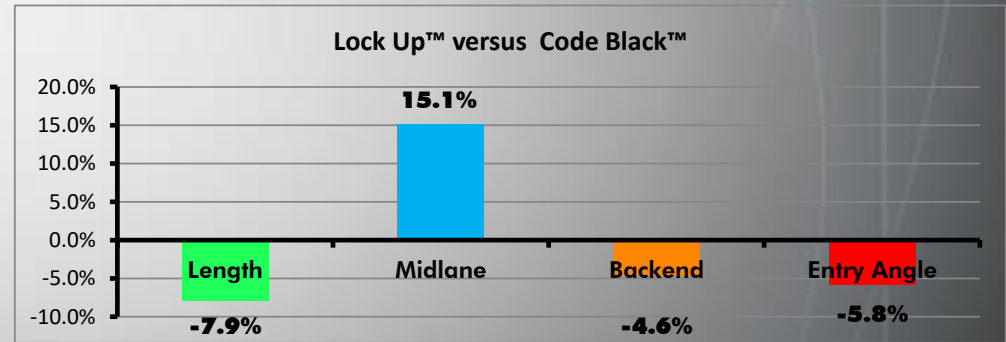


Code Black™
 R2S™ Pearl Reactive
 1500-grit Polished
 RAD4™ Core

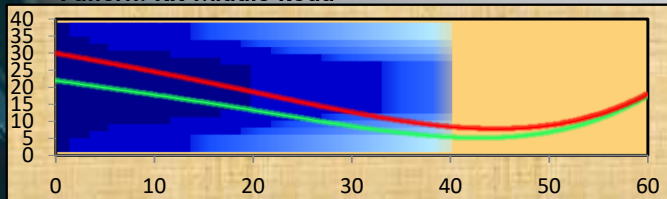


→ **Code Black™**
 Laydown: 21.95
 Launch Angle: -2.30°
 Break Point: 43.00'
 Impact Point: 17.48

- The Lock Up laydown was 8 boards deeper than Code Black.
- The Lock Up generated about 15% more midlane read.
- The Code Black gave about 8% more length.
- Both balls finished high flush.



Pattern: KK-Middle Road



Tester: Steve Kloempken
 Delivery: Right Hand Tweener
 Rev Rate: 345 RPM
 Rotation: 65°
 Tilt: 13°

